

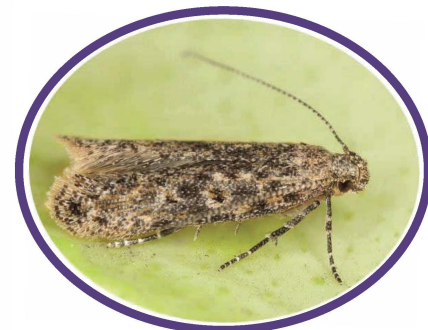
Tomato Leaf Minor

Tuta Absoluta

Pest Details

Adult

Wingspan of 10-12mm and a body length of ca. 6mm. Forewings are silvery grey and brown with dark spots. Antennae are full form with alternating light and dark segments. Labial palps are recurved.



Larvae

Newly hatched larvae are whitish yellow and ca. 0.5-0.9mm long. Mature larvae become yellow-green with a pinkish colour dorsally and reach 7.5mm in length. The head is dark coloured.

Eggs

Cylindrical, ca. 0.36 x 0.22mm in size and creamy white to yellow, becoming darker with age. Laid on the underside and to a lesser extent on the upperside of leaves.

Distribution

Europe, Africa, South America, the Middle East, India and Russia.

Economic Host(s)

Tomato and to a lesser extent potato.

Symptoms/Signs

After hatching young larvae penetrate into leaves, fruits, buds and stems to feed within galleries or blotch like mines. Leaf mines contain darker frass and become necrotic. Stem galleries prevent plant development. Larvae prefer to attach apical buds, flowers and fruits. Larvae do not attack potato tubers.

Generations

5-12 (climate dependant)

Monitoring

Adults Present

May to October (climate dependant)